

# Profilactus

## Construction site safety & alarm system

Art-No.: 14-000

### Detection & Warning

of intruding vehicles  
into a construction site

### Dual warning

for the maintenance staff and the  
person causing the accident

### Modular design

endlessly expandable



## Technical Data

### Base station

|                                          |                  |
|------------------------------------------|------------------|
| Operating voltage:                       | 12V              |
| Power supply type:                       | 2x 6V accu       |
| Operating time:                          | 300h             |
| Charging time:                           | 10h              |
| Warning:                                 | visual & audible |
| Sound volume with electric horn:         | 112dB            |
| Sound volume with pneumativ double horn: | 146dB            |

### Pager

|                    |                             |
|--------------------|-----------------------------|
| Power supply type: | 2x AA battery               |
| Warning:           | visual, audible & vibration |
| Sound volume:      | 90dB                        |

### Sensor

|                    |             |
|--------------------|-------------|
| Power supply type: | Lithium 3V  |
| Operating time:    | 5 years     |
| Wireless range:    | 200m - 300m |

## Characteristics

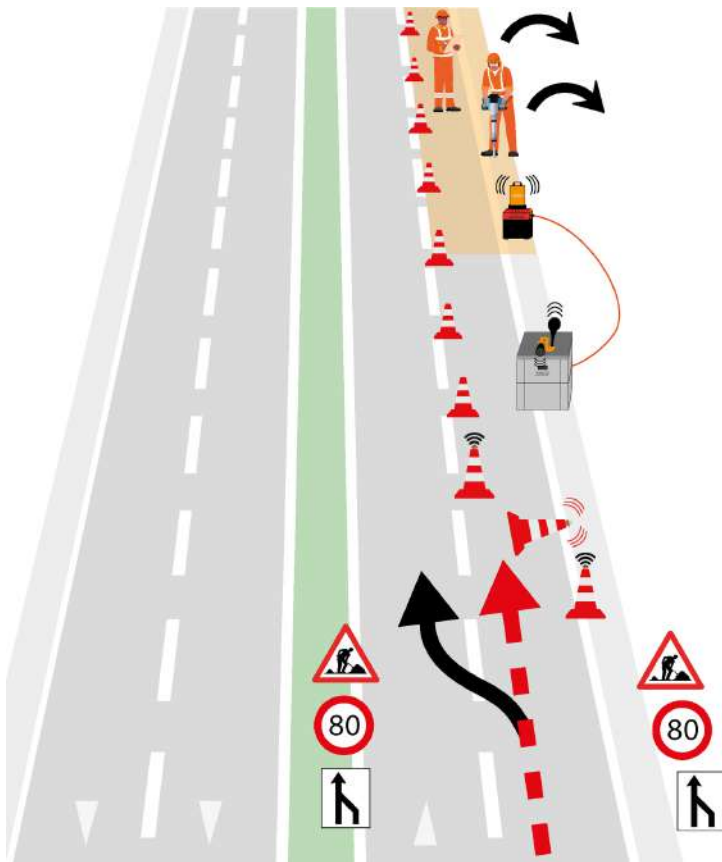
- Patented crash-proof hybrid sensor
- Easy handling: press sensor into the traffic cone, switch on alarm device - done!
- Reduction of maintenance staff injuries and property damage
- Plug & play
- Bidirectional communication

Video:



Verkehrstechnik  
Technique du trafic  
Traffic Control Engineering





## Legend to situation plan

1. Lane reduction of the right lane. Normal traffic merges into the left lane.
2. Intrusion of the person causing the accident into the barricaded area and detection by a triggered Profilactus sensor. A double wireless message is sent to the base station (BS) (4.).
3. The pneumatic double horn connected to the BS immediately releases, for 3 seconds, a dual 146 dB loud acoustic tone. One tone penetrates the vehicle through the windshield to the person causing the accident, thanks to the special frequency. The other warns the maintenance staff with a ship horn.
4. The BS itself triggers an acoustic and visual warning of 15 seconds. It also activates additional alarm devices (pagers or other BS) if available.
5. Immediate escape of the maintenance staff.

## Roadworks warning modules



### Profilactus-S

Typically used on municipal roads to warn people  
Consisting of:

- Sensors
- Pager
- Storage box-S



### Profilactus-M

Typically used on main, state and county roads to warn people and groups  
In addition to equipment Profilactus-S:

- Base station
- Charger
- Electric horn
- Storage box-M



### Profilactus-L

Typically used on freeways and highways to warn groups and the person causing the accident  
In addition to equipment Profilactus-M:

- Profilactus-S
- Pneumatic unit
- Pneumatic horns
- Storage box-L



## Contact us

FRIKE electronic AG  
Signalstrasse 1, 8194 Hüntwangen  
Switzerland  
+41 44 869 23 44, [info@frike.ch](mailto:info@frike.ch)  
[www.frike.ch](http://www.frike.ch)



Verkehrstechnik  
Technique du trafic  
Traffic Control Engineering